

TO WHOM IT MAY CONCERN

This is to inform that the proposed project “ JYOTI COTTAGE ROW HOUSE-2” situated at Shakespeare Sarani, jyotinagar near webel it park, Asansol over R.S. & L.R. plot no.- 937, 939, L.R. Khatian no.- 957, 3199, MOUZA- Gobindapur, j.l. no.- 18, under P.S.- Asansol (N), District- Paschim Bardhaman, West Bengal, within the pin 713341, includes **following open Garage space in the Project sanctioned**

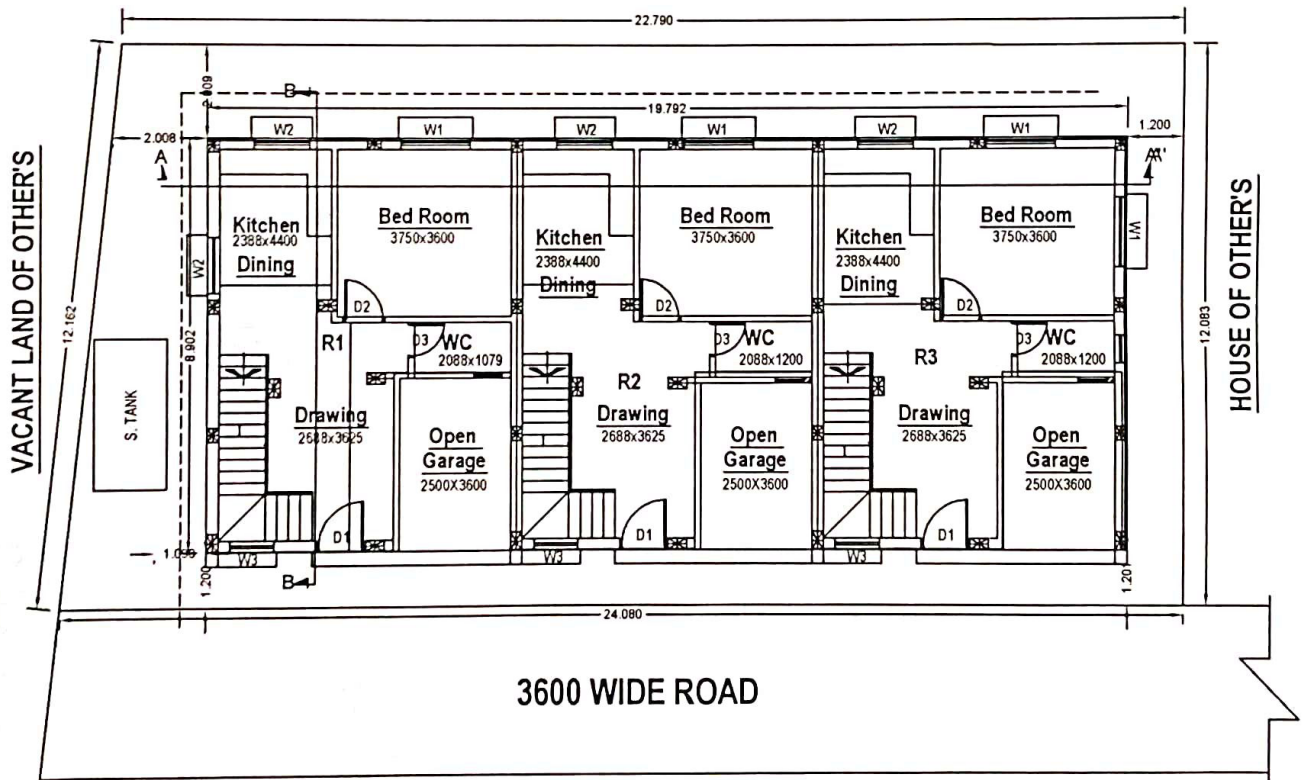
SL. NO.	BLOCK NO.	NUMBER OF COVERED GARAGE	NUMBER OF OPEN GARAGE	TOTAL (OPEN GARAGE)
1	ROW HOUSE-2	0	3	3

For NETFLEX HOMES PRIVATE LIMITED

Netflex Homes Private Limited
Md. Kalimuddin
Director

Md. KALIMUDDIN
Authorized Signatory

OPEN GARAGE OF JYOTI COTTAGE ROW HOUSE -2



SITE PLAN WITH GROUND FLOOR PLAN



Netflex Homes Private Limited

M. D. K. K. K.
Director